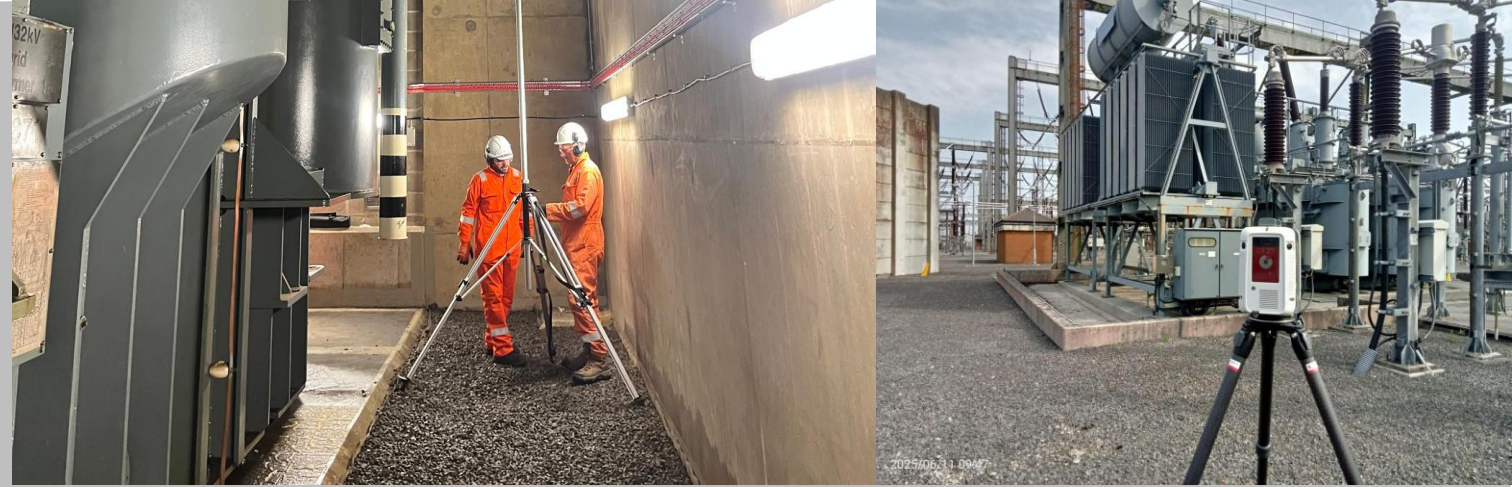




3D ENGINEERING
— SURVEYS LIMITED —

At 3D Engineering Surveys, our team has extensive experience across a range of sectors, including power, transmission & distribution, piling, bridges, rail infrastructure and tamping, groundworks, drainage, utilities, residential developments, foundations, oil & gas and substations. This depth of expertise enables us to respond flexibly to any project requirements, operating nationwide, day or night.

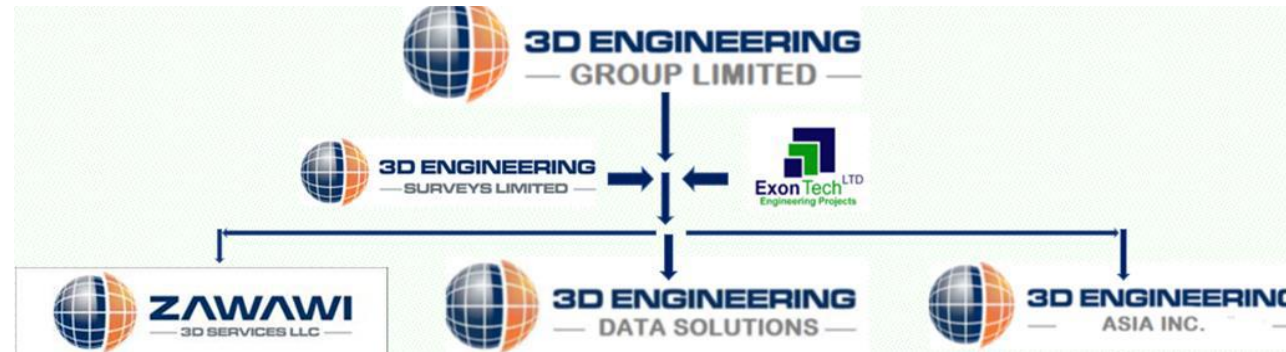
April 2026



Setting Out & Site Engineering

www.3dengineeringsurveys.com

Introduction to 3D Engineering Group



3D Engineering Surveys Ltd (3DES) is based in the UK with offices in UAE & Manilla.



3D Engineering Surveys Ltd are directed by chartered surveyors and is regulated by the Royal Institution of Chartered Surveyors, is a member of the European GPR Society, our UAV department is authorised by the CAA and our QA systems managed to ISO 9001 standards,

3D Engineering Surveys Ltd (3DES) is based in the UK with offices in UAE & Manilla.

3D Engineering Surveys Ltd has developed over twenty-five years has developed systems which are constantly reviewed and developed ensuring that we offer the latest products to our global clients assisting them in managing their plants for asset management, redesign, expansion, upgrade and relocation / integration purposes.

The following presentation illustrates our processes and methodologies adopted enabling us to complete scan to BIM Intelligent 3D Models and all associated documentation



Ponsandane Sidings for GWR

Our infrastructure setting out services cover drainage systems, utilities, roads, kerbs, and external works. Regularly working with large clients on infrastructure projects, we ensure all site features are correctly aligned and installed to specification, supporting smooth project progression. Our work has contributed to the maintenance and expansion of Network rail lines, national grid utilities and national highways.

We accurately transfer design information from drawings to the site, ensuring all structural elements such as gridlines, foundations, columns, and slabs are positioned correctly. Using our suite surveying tools, such as the Leica TS16, our experienced surveyors can ensure the build follows its intended design.



Site Engineering Services



We provide comprehensive site engineering support to manage and maintain accuracy throughout the construction lifecycle. This includes control establishment, as-built verification, QA reporting, and ongoing dimensional checks to ensure works meet design specifications. By working closely with project teams on site, we help identify and resolve issues early, improving efficiency, quality, and overall project delivery.

- Level checks & grading
- Cut & fill analysis
- Earthworks volume calculations
- QA/QC verification
- PGM Installations
- As-builts & redline drawings
- Site records and documentation as required



Surveying Services



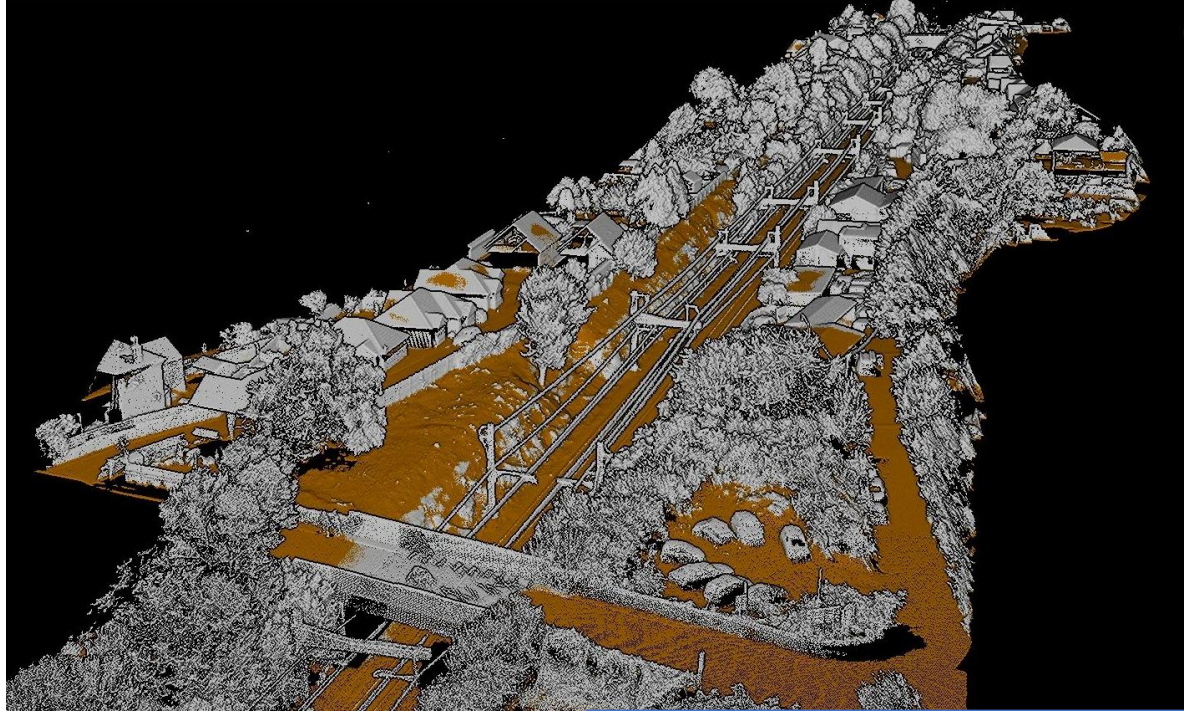
We offer a full range of surveying services, from topographical and measured building surveys to monitoring and verification. Using cutting-edge equipment and proven methodologies, we capture highly accurate data to support design, planning, and construction. Our surveys provide a reliable foundation for projects of all sizes, ensuring clarity, confidence, and precision from start to finish.



- Topographical surveys
- As-built surveys
- Monitoring & deformation surveys
- Control networks (GPS/Total Station)
- PAS:128 buried utilities
- Bathymetric surveys



Digital Services



Point Cloud for GWR

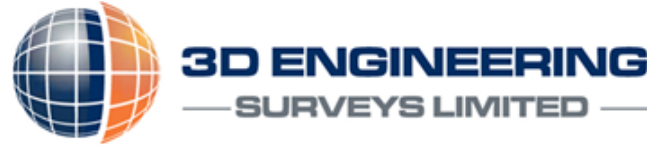
We deliver 3D modelling, CAD drawings, drone surveys, and BIM support. These tools improve visualization for design, planning, and coordination, helping to reduce risks and increase efficiency on site.

Technology-Driven Services

- 3D modelling, BIM & DTM
- CAD drawings
- Drone (UAV) surveys
- Laser scanning

Thank you for your time

For more information, please contact



William Watton

Engineering Manager

william.watton@3dengineeringsurveys.com

Or

Samuel Verth

Chartered Land Survey

Samuel.verth@3dengineeringsurveys.com

